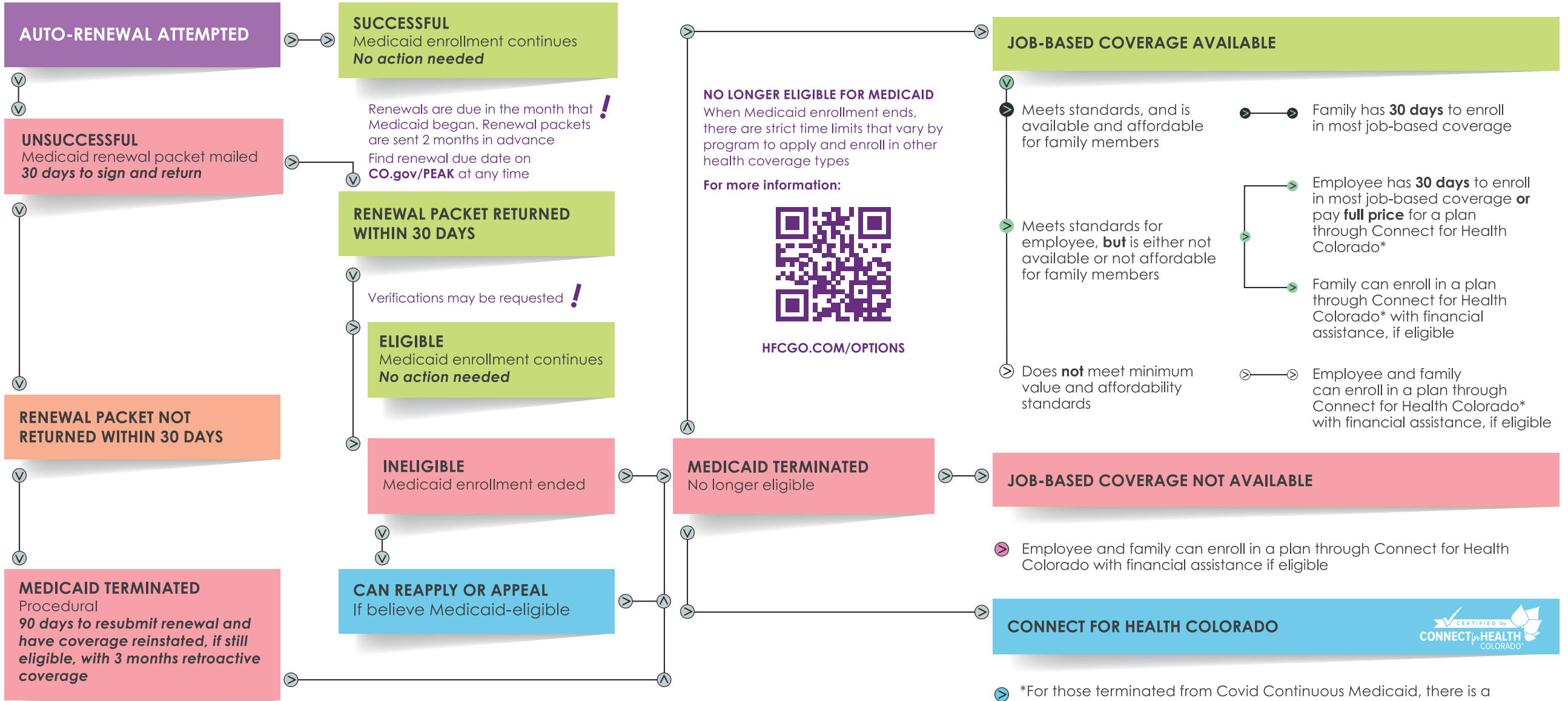


# ENDING OF CONTINUOUS MEDICAID

This graphic shows what is needed to maintain Medicaid enrollment when the continuous enrollment associated with the public health emergency ends, and pathways to maintain seamless health coverage when someone is no longer eligible for Medicaid



\*For those terminated from Covid Continuous Medicaid, there is a "Special Enrollment Period" to enroll in a plan through Connect for Health Colorado with financial assistance if eligible, from 60 days before Medicaid is terminated through July 30, 2024  
ConnectForHealthCO.com | 1-855-752-6749 | TTY: 1-855-346-3432



**HAVE QUESTIONS?**  
[CCHACARES.COM/UUI](http://CCHACARES.COM/UUI)

Send feedback about this document at [HHSCommunications@BoulderCounty.org](mailto:HHSCommunications@BoulderCounty.org)